



The Tidings

the monthly newsletter of

Pineda Presbyterian Church (PCUSA)

Sunday, July 5th

10:00 a.m. Worship Service
with Communion (*Sanctuary*)

Sunday, July 12th

11:00 a.m. “Worship Around the Table”
with Grace Communion Church
(*Fellowship Hall*)

12:00 p.m. Potluck Lunch (*Fellowship Hall*)

Sunday, July 19th

10:00 a.m. — Worship Service (*Sanctuary*)

Sunday, July 26th

Mission Connection Sunday

10:00 a.m. — Worship Service (*Sanctuary*)

11:00 a.m. — Potluck Lunch with Mission Guest
(*Fellowship Hall*)

July Lectionary

July 5th

Genesis 24:34-38,
42-49, 58-67

Romans 7:15-25a

Matthew 11:16-19, 25-30

July 12th

Genesis 25:19-34

Romans 8:1-11

Matthew 13:1-9, 18-23

July 19th

Genesis 28:10-19a

Romans 8:12-25

Matthew 13:24-30, 36-43

July 26th

Genesis 29:15-28

Romans 8:26-39

Matthew 13:31-33, 44-52

Pineda Presbyterian Church

5650 N. Wickham Road, Palm Shores, FL 32940

pinedapc.office@gmail.com

pinedapc.org

(321) 259-1330

PASTOR'S NOTE

Rev. Emily Wasser

To the Wonderful People of Pineda Presbyterian Church,

As we enter into the hottest (and wettest) time of the year here in Florida, I am coming to you with an invitation for something new and exciting! A Churchwide Mini Retreat! Yay!

Do you remember, a few years back, when you sat around tables and answered questions and talked about your hometown and the opportunities that you had here to be witnesses to the resurrection of Christ? (I hope you remember it, I need you to remember it, because I wasn't here yet to remember it!) What all that amounted to was a wonderful thing the PNC who called me would use to pique my interest in this little church. It's called "a mission study." Most churches are required to do this in order to bring a new pastor into the church. I've read several of them in my time and can say that yours is in fact something special, crafted with care and affection.

But, no matter how unique, a mission study will never be more than words on paper...unless the church does something about it. And that, my dear church, is exactly what we're going to do.

On Saturday, July 18th, you and your spouse, and your kids, and your deacons, and your friends, and your Bible study group, and your elders, and the choir, all of you are invited to Eastminster Presbyterian Church from 10AM to 3PM to participate in a "mini retreat." The goal of this retreat is to look back on our mission study, brainstorm, talk about ideas, and make a plan for implementing those ideas as we move forward in our relationship. We want to bring our ideas to life! I want to hear those ideas for myself, right from you! But for this to work, I need your help!

So, what can you do?

- Step 1:** Check your calendar! Are you free July 18th? Can you come for the entire time? Part of the time? 30 minutes? Awesome!
- Step 2:** Call Rhenae and RSVP by July 16th! We need to give Eastminster a number for how many of us to expect (so we know we'll all fit in the room)!
- Step 3:** Prepare! It would be awesome if you could read the mission study ahead of time, but if not, that's okay, we'll hit some of the major points first thing in the morning. The mission study, should you be interested in some light reading between now and then, can be found by emailing Rhenae.
- Step 4:** Show up! Arrive bright and...er...later, at 10AM on the day of the retreat. Be sure you've had your morning coffee and breakfast. Be prepared to talk, listen and pray as we discern where the Spirit of God is calling us to in our corner of the world.



Continued on next page

Pastor's Note continued

If you've followed all of those steps, then I hope to see you on July 18th at 10AM! I promise, we will go no later than 3PM. Details about lunch will be coming soon. And thank you so much for being willing to sit down and have these conversations with me and your fellow siblings in Christ. The Church will only ever be what we choose to make it and dreaming about what we can turn it into is a wonderful opportunity, indeed.

Peace to you,

Emily

member spotlight

Hannah Webb



I was born on a banana plantation in La Lima, Honduras. My father worked as a telegraph operator for The United Fruit Company (Chiquita Banana). My parents were born and raised on the Bay Islands of Honduras. When I was ten my father got a job with AT&T and we moved to Tegucigalpa, the capital, where I attended the American School. It was a bi-lingual school run by Americans who worked for the embassy. When it was time for high school I came to the United States and graduated from a boarding school in Gainesville, Georgia.

That summer I met my future husband. I went to Baylor University for a while then went home and got married. My husband worked for PanAm Airways so we lived in Honduras for four years, my two sons, Ian and Kirk were both born there. We then moved to Merida, Mexico where my last son, Alex was born. Then on to Ossining, New York for four years. From New York we moved to Guatemala City. A week after arriving we experienced a 7.5 earthquake that killed about 20,000 people. Now that was an experience!! Then on to Trinidad and Tobago and lastly Sao Paulo, Brazil. Sao Paulo and Brazil was our favorite assignment. What a beautiful country. We finally returned to the Tampa area. I think those years abroad gave the whole family a different view of life.

My husband and I divorced soon after we moved back. I worked for the Home Shopping Network. They were still in a strip-store center not the big company it became. A few years later I met my second husband, Gary. We spent the next seven years in Ogden, Utah. (It took me a year to learn to drive in the snow.) From Utah we moved to Portland, Oregon to take care of Gary's parents. I got a job with the Portland Oregon Visitors Association, and I really got to know about the area. At that time, Gary was battling cancer and I lost him in 2007. I decided to return to Melbourne as my mother and sister were both here and my sons were in the Tampa area. My parents were one of the first members of this church and I have never forgotten the church's kindness to them. (Especially Nancy McIntyre.) I thank you welcoming me and making me feel a part of it.

PPW BIBLE STUDY EVENT

All ladies of Pineda are invited to sign up for the
**Central Florida Presbyterian Women's
Annual Bible Study Event!**

It will be held right here at Pineda Presbyterian Church on

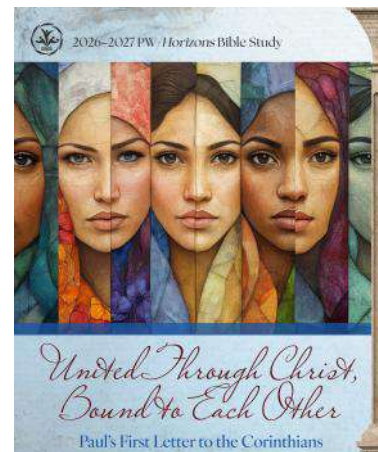
**Saturday, August 8th
from 9:00 a.m. – 2:00 p.m.**

Pastor Emily Wasser will be the facilitator for the Bible Study Event!

A light breakfast & lunch are included.

The regular cost of \$20 per person will be covered by the church
for all Pineda ladies if you sign up in advance.

Please sign up in the Fellowship Hall by Sunday, August 1st.



MISSION CONNECTION SUNDAY



**Mark your calendars for Mission
Connection Sunday on July 26th
with a Potluck Lunch and a
Guest Speaker from St. Pauly Textiles!**

***Please bring a favorite dish to share
and join us for worship at 10 AM
followed by the Potluck Lunch.***



7/5

Dwan Buie

7/10

Al Giddings

7/17

Sue Giddings

7/30

Tom Eddleman
& Jerry Scarpace

WORSHIP AND MUSIC NOTES



Join us for Worship Around the Table!

For centuries Christians have had a wonderful relationship with God, fellowship...and FOOD! On July 12th, starting at 11AM, our aim is to celebrate this wonderful relationship by gathering around the tables in our newly renovated Fellowship Hall for worship.

And this won't just be any ordinary worship, this will invite us into the Extraordinary times of Ordinary times as we lift our voices and turn this worship service into a hymn sing and a dedication service. We have invited our siblings from the Grace Communion Fellowship to worship and sing with us and now we're asking you to reach out to anyone you might know, who loves to sing and eat. Invite them along! Bring a friend! And bring a potluck dish to share! Toward the end of the service we intend to dedicate our new and improved Fellowship Hall to all the magnificent work and events it'll play host to in the years to come. And afterward, we'll serve up all our dishes and enjoy lunch together as one Christian Community!

Please save the date (July 12th) and especially the time (11AM) in your calendar, invite a friend, invite a foe, invite the random people you meet in the grocery store aisle, and keep your eyes peeled for information on submitting hymns for this awesome morning. We can't wait to celebrate and worship around the table!

FOOD PANTRY DONATIONS

During June the food pantry has assisted 90 neighbors consisting of 297 individuals. An average of 126 bags were distributed with a maximum of 151. 13 new families were served. With the increased numbers, volunteers would be welcomed. If you are interested and available Thursday afternoon and evening call the Office of Advent Lutheran Church (321-259-8515) to inquire. Thank you, all!

Sunday, July 5th - Canned Corn

Sunday, July 12th - Pasta Sauce

Sunday, July 19th - Peanut Butter

Sunday, July 26th - Canned Seafood

(Tuna, salmon, sardines, etc.)



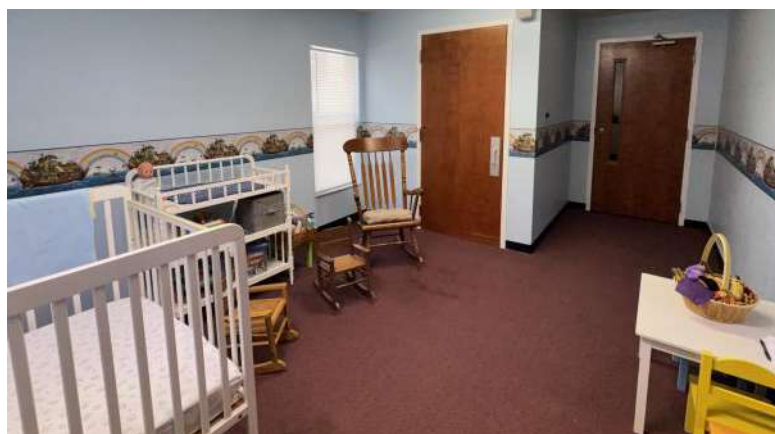
UPDATES AND UPGRADES

by Elizabeth Bumgarner

In June the Fellowship Hall was cleared out to make way for some upgrades in flooring and paint color. WOW...what a transformation. Job well done. But you are probably wondering what happened to the bookcases and books. Well, glad you asked. Two bookcases will be used by the scouts as a display. Then, many of the books were taken by members or donated, and some of the books were saved to be used in other church spaces.

There were three classroom spaces that got some updates because of the Fellowship Hall upgrade. The **nursery** (at the back of the sanctuary) was decluttered and cleaned up to be more accommodating for families with young ones. **Classroom A** (off the narthex) was cleaned up, and room was made in the bookcases for Bibles, commentaries, reference books and past book study materials. **Classroom B** (in the back of the sanctuary) has been cleaned, and the bookcases now hold blue hymnals, music books, Presbyterian reference books such as the Book of Order, Book of Confessions, devotional books, and some popular fiction books with Christian themes.

These classroom spaces have been transformed to be more welcoming to use, especially for those who want to have a session, diaconate, or committee meeting or need a place to study. They provide an environment that is more intimate for small groups to use. Take a moment to visit these spaces and see how when one space gets an upgrade other spaces get to join in on the fun.



Top Left: Classroom A

Top Right: Classroom B

Bottom Right: Nursery

Pineda Presbyterian Women are collecting school supplies for local elementary schools. Please see the list of most needed items below.



- ◆ Backpacks
- ◆ Large pencils for kindergarten students
- ◆ Primary Journal
(picture space at top/handwriting lines on bottom)
- ◆ Fine point black dry erase markers
- ◆ Dry Erase erasers
- ◆ Boxes of tissues
- ◆ Lysol wipes
- ◆ Other general school supplies such as: pencils, crayons, erasers, glue, glue sticks, paper, folders, hand sanitizer, pencil cases, scissors, etc.

Donations may be dropped off in the Fellowship Hall through Sunday, July 26th. Monetary donations are also being accepted. Checks made payable to Pineda Presbyterian Women may be given to Dian Walker or Hannah Webb.

Our Fidelity Investment account increased from **\$155,824** to **\$157,143**, in June and the Endowment account had a loss of **\$1,001** for the month. The operating fund donations total \$81,397 so far this year, which is approximately \$33,000 behind the pledged amount of \$228,927 for the year.



As many of you have seen, the fellowship hall renovations are complete. The new floor looks great and the fresh paint brightens up the hall.

On July 12th, we will be holding a mission fund drive. The special offering will be for Presbyterian Disaster Assistance to aid the earthquake relief. There will be special envelopes created for the donations. Thank you in advance for your support.

Since Bonnie's retirement, we are still looking for a new organist. Our current budget may limit the pool of potential candidates. But we will continue to search for just the right organist for our church.

Barb Mathewson

Finance, Stewardship & Endowment Chair

SESSION SOUND BITES

June 16, 2026 Meeting

- ◆ The meeting opened with prayer led by Elder Melissa Ketterman from I Corinthians 12:4-18 and a devotional from The Gospel According to Winnie-the-Pooh reminding us of the importance of accepting our differences and each other because those differences were given to us by God - to serve God and the church. We need each other and our differences.
- ◆ Minutes of the May 20 stated and June 14 called session meetings were approved.
- ◆ Two new members joined Pineda on June 14 using the new process for receiving members. Two more are expected to join on June 21.
- ◆ The July session meeting was rescheduled to Wednesday, July 22 to accommodate the hospitality class.
- ◆ Starting in July, Session will meet in Sanctuary Room A. Many thanks to Elizabeth Bumgarner for her work to refresh the sanctuary meeting rooms!
- ◆ Fellowship Hall will be rededicated on July 12 with a joint service and potluck with Grace Communion Church starting at 11 a.m. The Tech Team is making arrangements to livestream the worship service from Fellowship Hall.
- ◆ Facilities has arranged for an evaluation of the doors in Fellowship Hall to get recommendations to improve safety and security.
- ◆ A community chorus group has asked for information regarding using Fellowship Hall on Thursdays for their rehearsals. The information has been provided to them and we are waiting for their response.
- ◆ The Mission Team will be honoring veterans at Pineda's annual Independence Day celebration and cook out on June 28th at 11 a.m. John Ellis will present a program of Patriotic Music. Invitations are being extended, with encouragement to join us for worship at 10.
- ◆ The Tech Team is applying for a Presbyterian Foundation technology grant to upgrade the projector, replace the screen with a rear projection monitor, and other tech improvements for worship.
- ◆ Elder Dian Walker closed the meeting with prayer.

NOTE: If you have questions about any of these items, or would like more information, please contact the clerk of session or the appropriate ministry team chair. A list of session members and team chairs is printed on the back of the Sunday bulletin and is on the Our Team page of the church website.



Altar flowers are now \$45 per Sunday which includes two small arrangements. Flowers will only be delivered on Sundays when someone has signed up to sponsor them. We will have seasonal faux flower arrangements which will be displayed on Sundays when nobody has signed up. Please sign-up in the Fellowship Hall to sponsor flowers for a Sunday that is special to you!

JULY WORSHIP VOLUNTEERS

	July 5th	July 12th	July 19th	July 26th
	Worship Service at 10:00 a.m.	Worship Service at 11:00 a.m.	Worship Service at 10:00 a.m.	Worship Service at 10:00 a.m.
Communion Sunday	Joint Service with Grace Communion Church			Mission Connection Sunday
DEACON OF THE WEEK	Leslie Lyman	Cliff Smith	Karen Smith	Marilyn Bullard
LITURGIST	Pat Zinn	Betty Francis	Melissa Ketterman	Elizabeth Bumgarner
COMMUNION SERVERS	Elizabeth Bumgarner John Ellis Leslie Lyman			
USHERS	Ed Walker Cliff Smith Herb & Lin Dankmyer	Ed Walker Cliff Smith Herb & Lin Dankmyer	Ed Walker Cliff Smith Herb & Lin Dankmyer	Ed Walker Cliff Smith Herb & Lin Dankmyer






PINEDA PRESBYTERIAN CHURCH

5650 N. Wickham Road, Palm Shores, FL 32940

pinedapc.office@gmail.com

pinedapc.org

(321) 259-1330

Sunday	Monday	Tuesday	Wednesday	Thursday	Friday	Saturday
			1 4:15pm Bible Study (Fellowship Hall) 5:00pm Brown Bag Dinner (Fellowship Hall) 5:30pm "The Art of Hospitality" Study (Fellowship Hall)	2 6:00pm Choir & Worship Band Rehearsal (Sanctuary)	3	4 
5 9:00am Adult Sunday School (Room A) 10:00am Worship Service with Communion (Sanctuary) 11:30am Fellowship & Faith Formation (Fellowship Hall)	6	7 10:30am Chair Yoga (Fellowship Hall) 11:00am LAFF - Lunch & Fun Fellowship (Fellowship Hall) 1:00pm "Heart Strings" Knitting & Crochet Group (Fellowship Hall)	8 3:15pm Finance Team (Fellowship Hall) 4:15pm Bible Study (Fellowship Hall) 5:00pm Brown Bag Dinner (Fellowship Hall) 5:30pm "The Art of Hospitality" Study (Fellowship Hall)	9 3:00pm Facilities Team (Fellowship Hall) 6:00pm Choir & Worship Band Rehearsal (Sanctuary)	10	11
12 9:00am Adult Sunday School (Room A) 11:00am "Worship Around the Table" with Grace Communion Church (Fellowship Hall) 12:00pm Potluck Lunch (Fellowship Hall)	13	14 10:30am Chair Yoga (Fellowship Hall) 11:00am LAFF - Lunch & Fun Fellowship (Fellowship Hall) 6:00pm Mission Team (Room A)	15 4:15pm Bible Study (Fellowship Hall) 5:00pm Brown Bag Dinner (Fellowship Hall) 5:30pm "The Art of Hospitality" Study (Fellowship Hall)	16 6:00pm Choir & Worship Band Rehearsal (Sanctuary)	17 5:30pm Game Night (Fellowship Hall) 	18  10AM-3PM (Eastminster Presbyterian Church)
19 9:00am Adult Sunday School (Room A) 10:00am Worship Service (Sanctuary) 11:15am Deacons' (Church Office) 11:30am Administration & Personnel (Fellowship Hall)	20	21 10:30am Chair Yoga (Fellowship Hall) 11:00am LAFF - Lunch & Fun Fellowship (Fellowship Hall)	22 6:00pm Session Meeting (Room A)	23 6:00pm Choir & Worship Band Rehearsal (Sanctuary)	24	25
26  9:00am Adult Sunday School (Room A) 10:00am Worship Service (Sanctuary) 5 Cents per Meal Offering 11:00am Potluck Lunch (Fellowship Hall)	27	28 10:30am Chair Yoga (Fellowship Hall) 11:00am LAFF - Lunch & Fun Fellowship (Fellowship Hall)	29	30 6:00pm Choir & Worship Band Rehearsal (Sanctuary)	31	